



Ideal for:

Solids-laden fluids

Media with fibers

Fouling effluents

Viscous Products

Free Flow Plate Heat Exchangers

PLATE CONCEPTS, INC.

www.plateconcepts.com



Design & Function

Plate Concepts has 8 models of Free Flow plates within our line of *MODUFLEX* plates. Free Flow Plate Heat Exchangers are ideal for cooling or heating process fluids containing fibers and solids or highly viscous products. Free Flow plates are specially designed with no metal to metal contact and large gaps (5 mm to 20 mm) between plates in the liquid area – allowing large particles to pass through the wide flow channels with minimal risk of blockage.

Key Features

- Plate Gap Sizes from 5 mm to 20 mm
- Port Sizes from 2" to 12" Pipe Size
- Surface Areas from 2 ft² to 24 ft²
- Design Pressure: 100 PSIG
- ASME Code Construction & U-Stamp
- Available in Stainless Steel, Titanium, and Higher Alloys
- NBR, EPDM, or Viton Gaskets

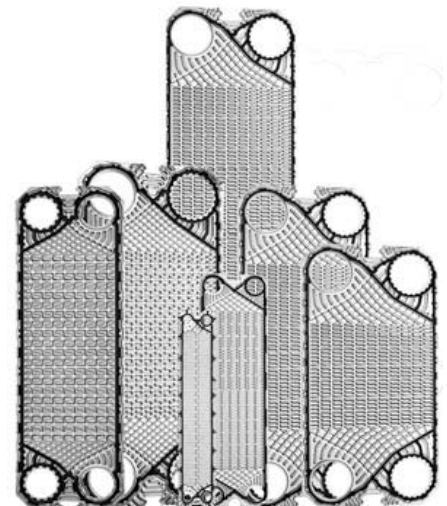


PLATE CONCEPTS, INC.
Plate & Frame Heat Exchangers

1221 Route 22 East
Lebanon, NJ 08833

Phone: (908) 236-9570
Fax: (908) 236-9575

info@plateconcepts.com



Free Flow Plates (Not just a Wide-Gap)

PLATE CONCEPTS, INC.

www.plateconcepts.com

Applications

Pulp & Paper

Food Processing

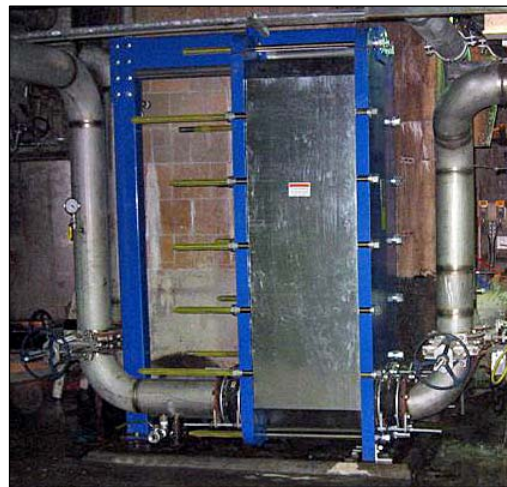
Renewable Fuels

Sugar Production

Ethanol / Grain Alcohol

Fermentation

Wastewater Heat Recovery



The Ideal Exchanger for Pulp & Paper

The Free Flow Plate Heat Exchanger pictured above is our plate model MFF084. Constant width 6 mm gaps between plates allow pulp fibers to pass through without impediment. This unit operates in continuous white water heat recovery service – achieving a heat load of 4,000,000 Btu/hr.

The Free Flow, multi-pass design and optimized channel velocities assure high thermal efficiency and maintenance-free operation with reduced downtime.



PLATE CONCEPTS, INC.
Plate & Frame Heat Exchangers

1221 Route 22 East
Lebanon, NJ 08833

Phone: (908) 236-9570
Fax: (908) 236-9575

info@plateconcepts.com

<i>PCI Model</i>	<i>Area ft²</i>	<i>Port in.</i>	<i>Gap mm</i>	<i>W in.</i>	<i>HT in.</i>
MFF024	2.96	2	5.0	9	51
MFF047	6.16	4	5.4	17	63
MFF066	7.06	6	20.0	26	102
MFF083	10.76	8	6.0	27	71
MFF084	13.99	8	6.0	27	86
MFF085	11.97	8	11.5	22	86
MFF086	24.65	8	6.0	27	133
MFF124	17.22	12	10.0	40	94

Pictured Above:

*Pulp & Paper
White Water Heat Recovery
Free Flow Design, Port Size: 8"
Heat Transfer Area: 1329 ft²*

Pictured to the Left:

*Design Data for our 8 Models of
Free Flow or Wide-Gap Plates*